

# Mostra

## CANDIAC

3½

SUPERFICIE PI. CA.  
AREA SQ. FT.

740 pi²

APPARTEMENTS / APARTMENTS

110, 112, 211, 213, 215, 311, 313,  
315, 411, 413, 415, 511, 513, 515,  
611, 613, 615, 708, 710, 712

\*Plan inversé / Reverse floor plan

1 - CUISINE / KITCHEN

12' - 0" X 8' - 7"

2 - SALLE À MANGER / DINING ROOM

9' - 3" X 13' - 8"

3 - SALON / LIVING ROOM

11' - 8" X 12' - 5"

4 - CHAMBRE / BEDROOM

10' - 2" X 12' - 0"

WALK-IN  
BUANDERIE / LAUNDRY ROOM

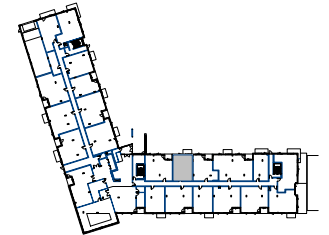
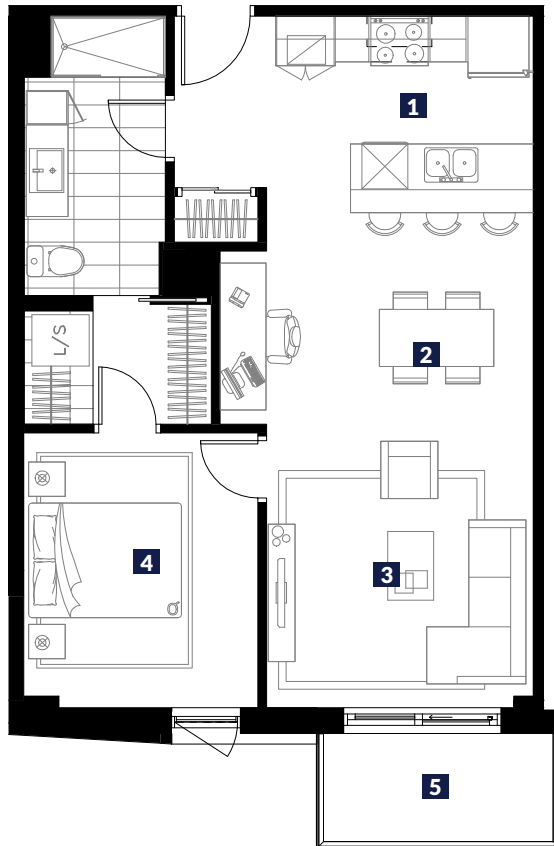
4' - 11" X 8' - 1"

SALLE DE BAIN / BATHROOM

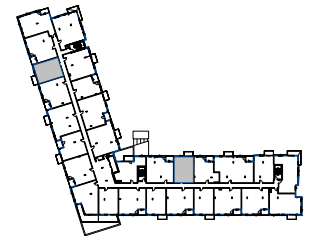
6' - 2" X 12' - 2"

5 - BALCON / BALCONY

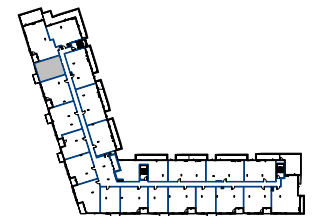
10' - 2" X 5' - 0"



PLAN CLÉ NIV. RDC



PLAN CLÉ NIV. TYPIQUE (2 À 6)



PLAN CLÉ NIV. 7

Plans préliminaires sujets à changements. La superficie brute des logements n'inclut pas celle des balcons et/ou terrasses. La superficie et la dimension des plans de vente sont approximatives et peuvent varier. Chaque appartement a une tête d'air climatisé et un condenseur sur le balcon. Le micro-onde (m-o) se trouve encastré dans le garde-manger. / Preliminary floor plans subject to change. The gross floor area of the units does not include the balconies and/or terraces. The area and dimensions of the sales plans are approximate and may vary. Each apartment has an air-conditioning unit as well as a condenser on the balcony. There is a built-in microwave in the pantry.

PRIX\*

SIGNATURE  
LOCATAIRE

SIGNATURE  
AGENT LOCATION

DATE

\*Ce prix est valide pour une période de 30 jours suivant la date de signature. This price is valid for a 30 day period following the signature.