

Mostra

CANDIAC

3½

SUPERFICIE PL. CA.
AREA SQ. FT.

740 pi²

APPARTEMENTS / APARTMENTS

102, 203, 221, 303, 321, 403, 421,
503, 521, 603, 621, 718

*Plan inversé / Reverse floor plan

1 - CUISINE / KITCHEN

11' - 3" X 8' - 8"

2 - SALLE À MANGER / DINING ROOM

13' - 8" X 8' - 11"

3 - SALON / LIVING ROOM

11' - 10" X 12' - 8"

4 - CHAMBRE / BEDROOM

10' - 0" X 12' - 4"

WALK-IN
BUANDERIE / LAUNDRY ROOM

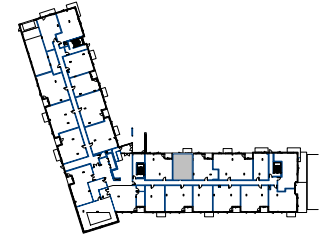
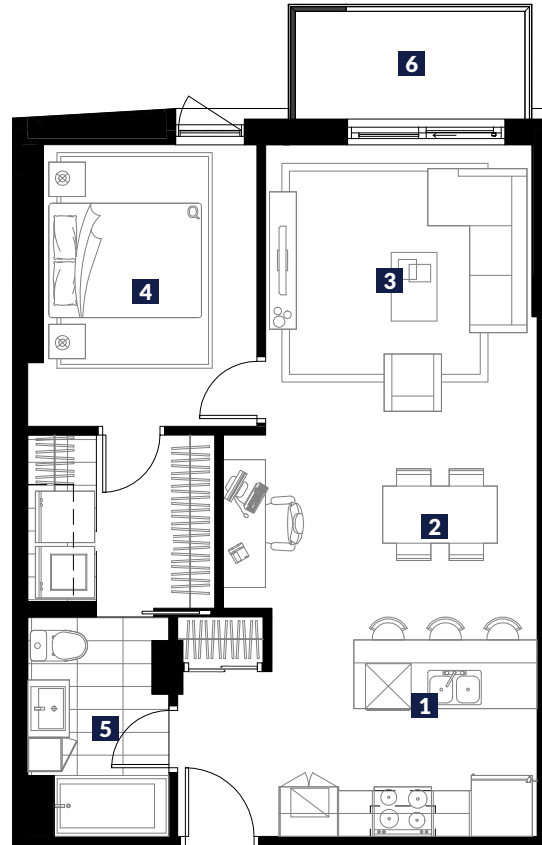
7' - 3" X 8' - 2"

5 - SALLE DE BAIN / BATHROOM

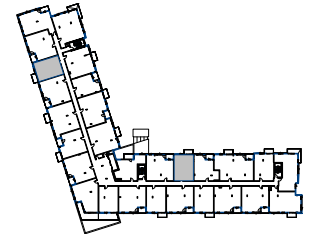
6' - 2" X 9' - 7"

6 - BALCON / BALCONY

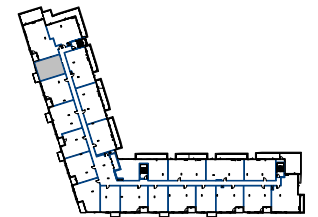
10' - 2" X 5' - 0"



PLAN CLÉ NIV. RDC



PLAN CLÉ NIV. TYPIQUE (2 À 6)



PLAN CLÉ NIV. 7



Plans préliminaires sujets à changements. La superficie brute des logements n'inclut pas celle des balcons et/ou terrasses. La superficie et la dimension des plans de vente sont approximatives et peuvent varier. Chaque appartement a une tête d'air climatisé et un condenseur sur le balcon. Le micro-onde (m-o) se trouve encastré dans le garde-manger. / Preliminary floor plans subject to change. The gross floor area of the units does not include the balconies and/or terraces. The area and dimensions of the sales plans are approximate and may vary. Each apartment has an air-conditioning unit as well as a condenser on the balcony. There is a built-in microwave in the pantry.

PRIX*

SIGNATURE
LOCATAIRE

SIGNATURE
AGENT LOCATION

DATE

*Ce prix est valide pour une période de 30 jours suivant la date de signature. This price is valid for a 30 day period following the signature.